



Lichen and fungus collections

Agneta Boxström, Sonja Still & Robin Sjöblom

Biological collections 2018 - University of Helsinki



Collection of specimens

- 3 specimens of the same species are collected from the same spot
 - three different developmental stages → all traits for species recognition present
 - the specimens do not need to be cleaned thoroughly as dirt gives ecological information
 - specimens are put in paper bags to minimize cross contamination of eg. spores
- Information about where the specimens were collected should be written down when collecting.
 - Date
 - Exact position (coordinates if possible)
 - Description of habitat
 - Other species, fungi and plants

Example: 15 sept 2018. Cantharellus cibarius collected from big population in Kaldnäs, Närpes (Oa) in mixed forest under big Betula sp. 5 m E of crossroads between Norra Kaldnäsvägen and Kaldnäsvägen.

Preparation of specimens

- Drying of specimens
 - 1-2 days in drying cabinets in 40 °C
- Partial rehydration using steam
 - 3-4 hours to make specimens pliable
- Flattening of specimens
 - pressed to make them smaller
 - drying
- Freezer (-40°C) to eliminate pests
- All 3 samples put in one ziplock bag
 - Arranged so all sides of specimens can be seen



Adding specimens to collections

- Ziplock-bag with specimen put in an envelope
- Label and ID-number

MUSEUM BOTANICUM UNIVERSITATIS, HELSINKI (H)

***Cantharellus cibarius* Fr.**

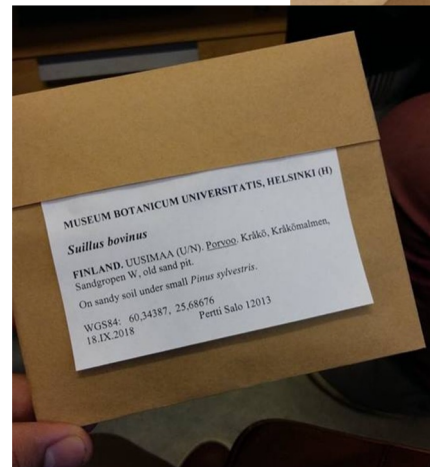
FINLAND. Ostrobothnia australis (Oa/EP) Närpes, Kaldnäs. 5 m E of crossroads between Kaldnäsvägen and Norra Kaldnäsvägen.

In mixed forest under big *Betula* sp.

N 62,41517 E 21,33558

15 september 2018

Karl-Johan Boletus 3071



Herbarium

Species + author

Collection place

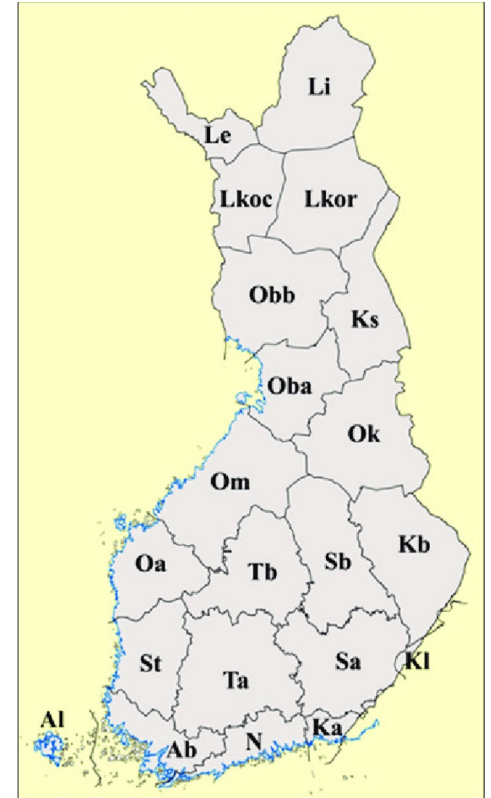
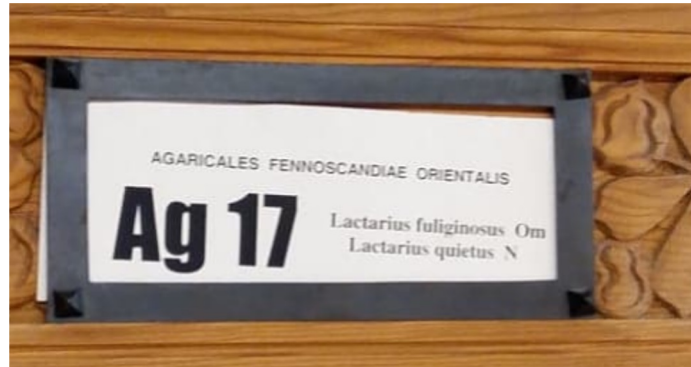
Habitat description

Coordinates (WGS 84)

Date Collector Coll. No.

Adding specimens to collections

- East Fennoscandian collections or General collections
- Taxonomic division
- Alphabetical order
- Regional division
- Added to database Kotka.



Maintenance of collections

- Damaging factors: Handling, dust, light, moisture etc.
- Adding and removing of specimens.
 - DNA denatures quickly (~5 years in lichens)
- Digital databases

