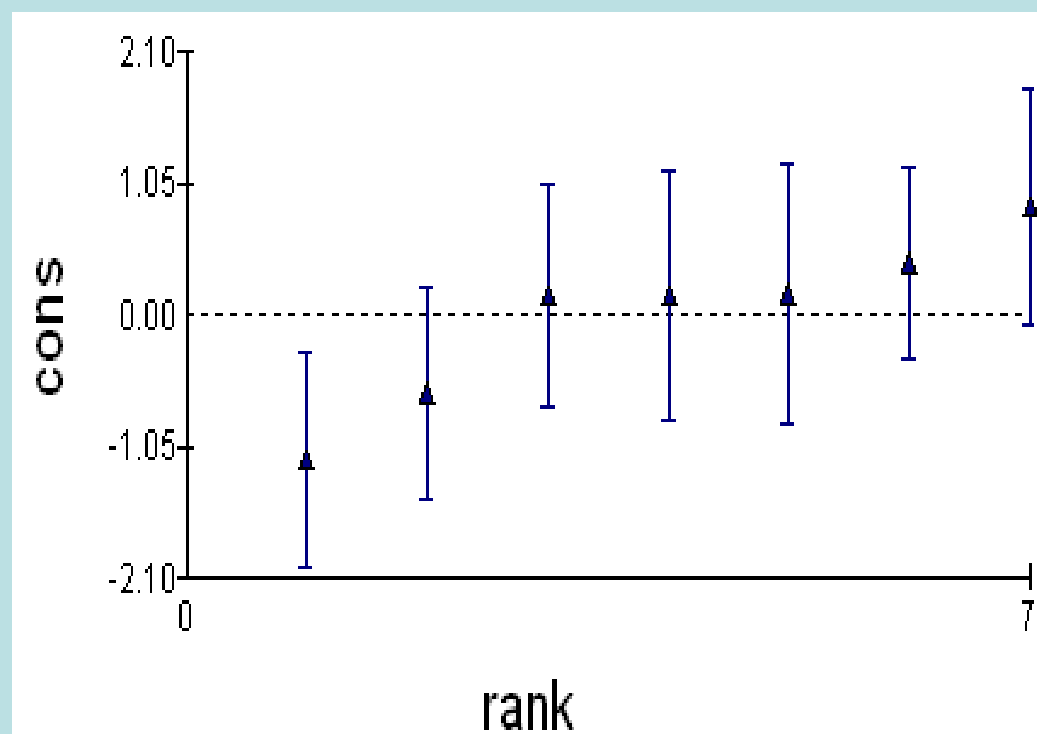
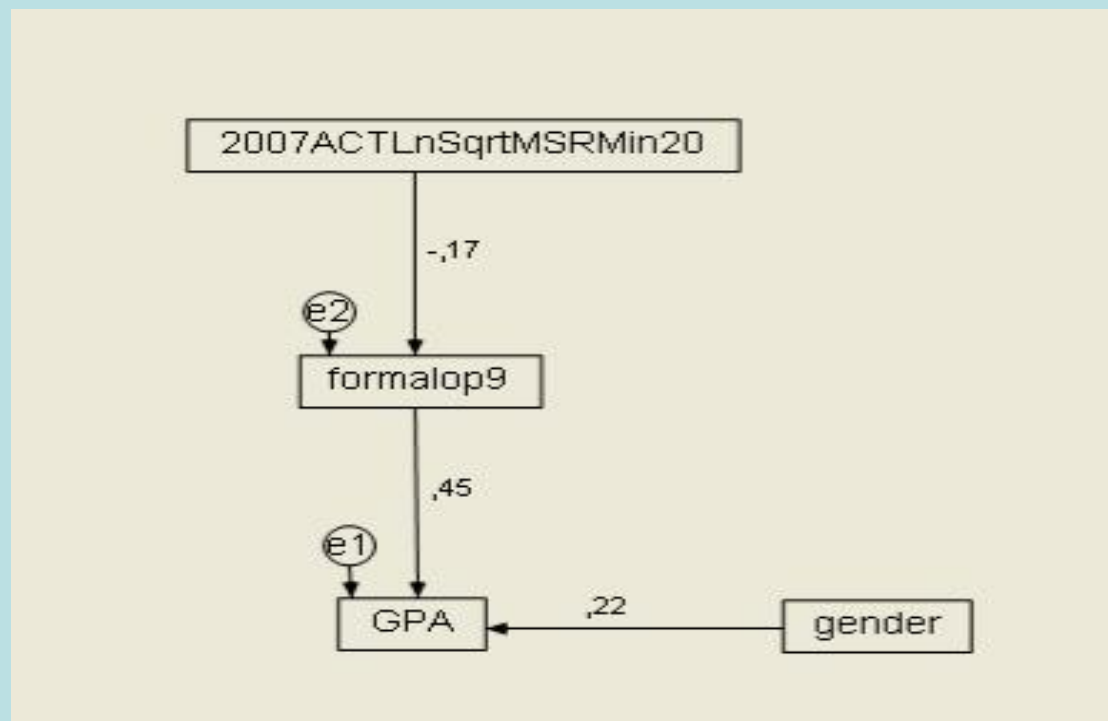


es were: 1. What is the
racting thinking, attention
achievement? 2. What is the
in school achievement, abstract
concentration? 3. What is the
group on studied variables?

t
ement
class



on school achievement, abstract
concentration? 3. What is the
group on studied variables?

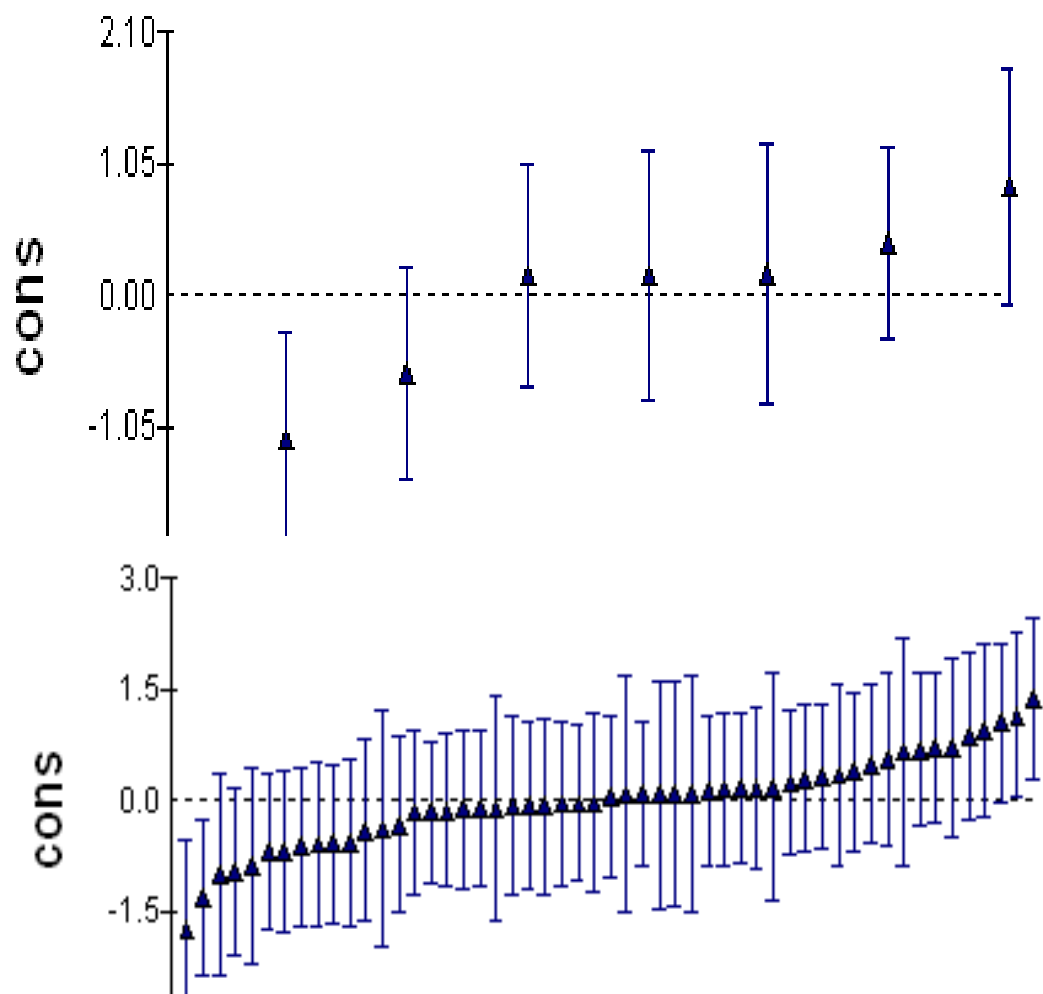
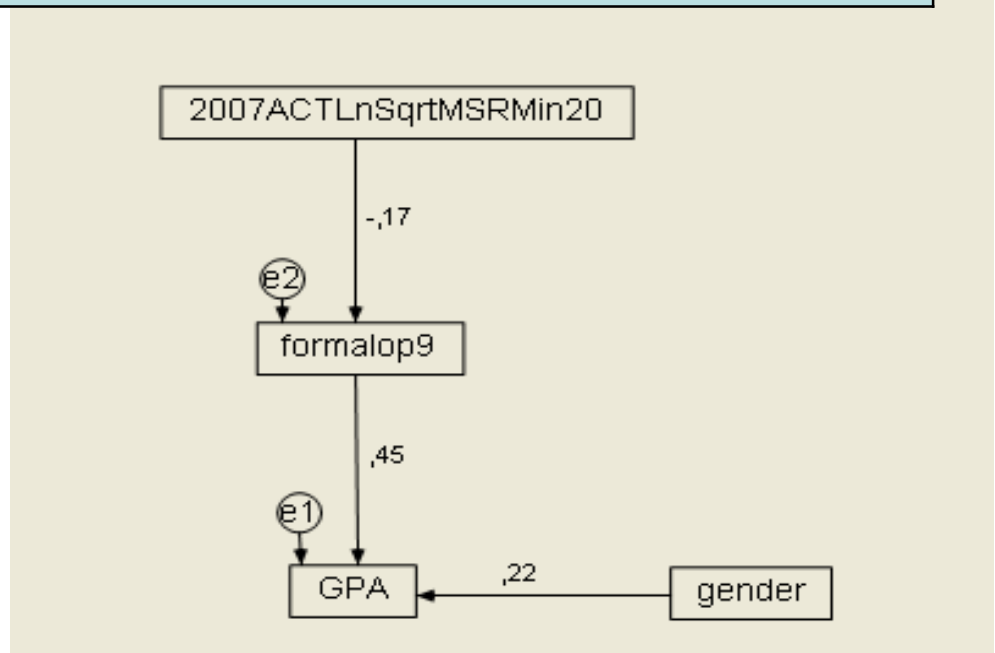
*abstract
n and*

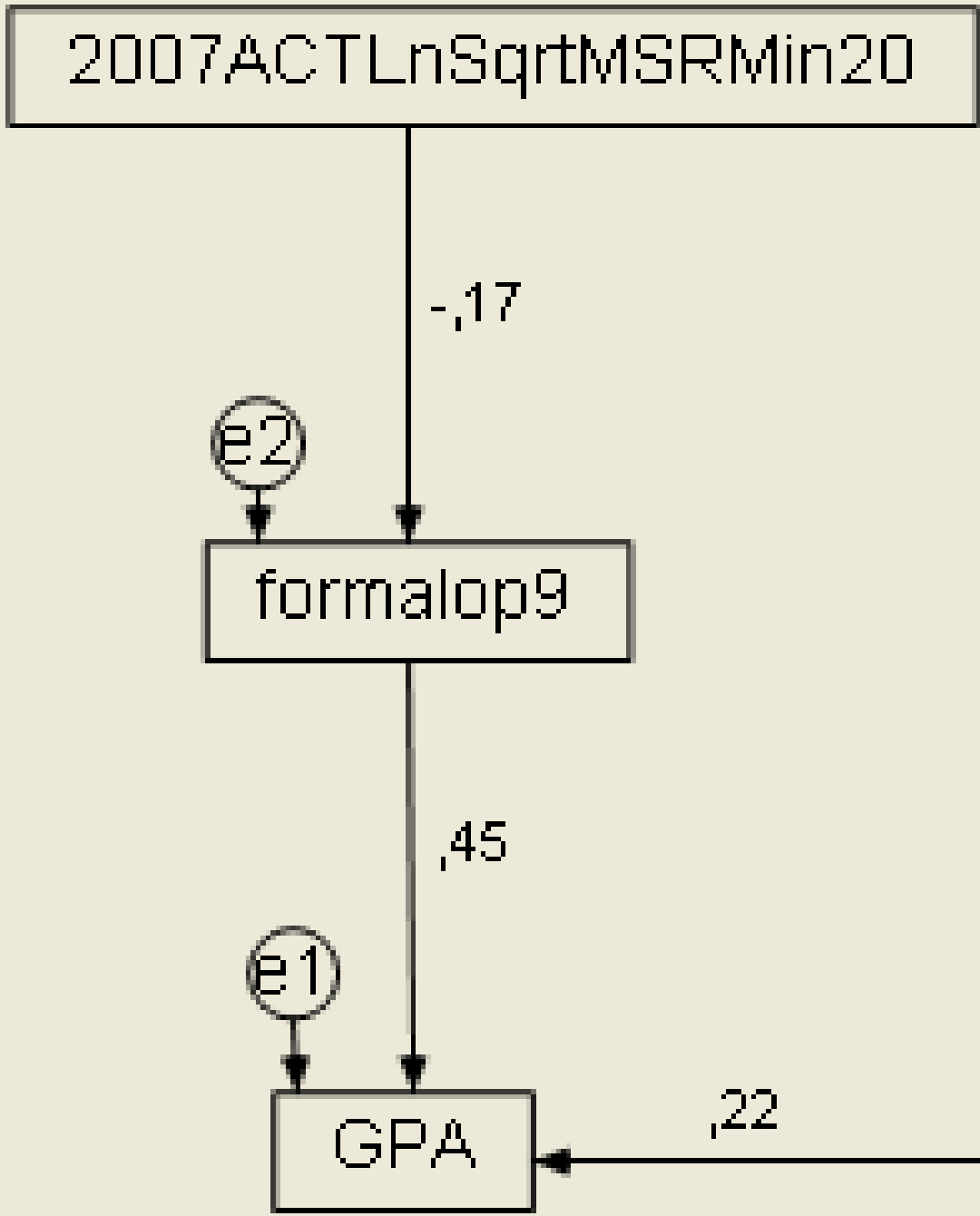
ass 10%

A
s classes.

ass 4%

individual 4%,





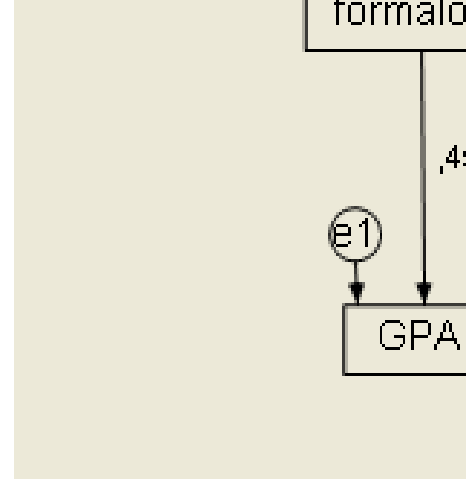
ant random gender slope.

6.

and individual 3%.

%, class 8% and school 2%.

ized, and search for most suitable
est duration).



• Achievement

between the :

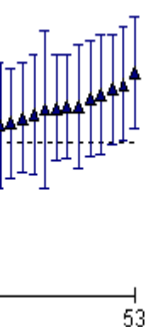
• *Gender:*

• Effect of gender on achievement at school level. A significant random effect was found.

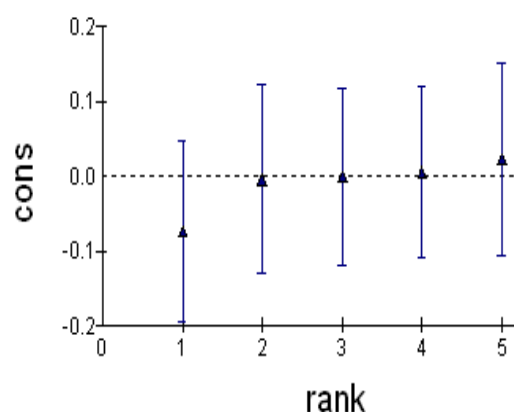
• *Formal operations*

• class 50%, school 50%

Attention: No significant effect



pools (right) ranked .



The variance component m